

# A4 DTF Printer

## Product Introduction

### 1. White circulation system

Advantage:

- (1) Inside and outside bottle circulation, prevents blockages from building up in the printhead .
- (2) Prevent ink precipitate in ink tube, save ink cost.



### 2. PET Film control system

Sheets and rolls film can be easily control by the printer

Advantage:  
Customers no need RollPrint software to control the PET Film, easy to use.



### 3. Regular automatic cleaning system

Automatically cleans the print head once every 12 hours under power-on state.

Advantage:

Consumes about 0.5 kWh of electricity every day. Prevent print head clogging.



### 4. White ink mixing system

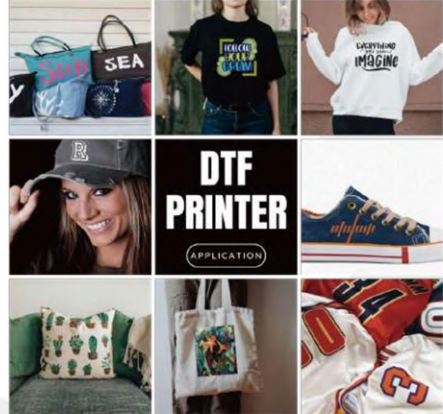
The white ink bottle has a motor unit that stirs the white ink.

Advantage:

Prevent white ink from settling, get the better white color printed effect and a high degree of color reproduction. Also it can prevent clogging the printhead, prolong the service life of parts.



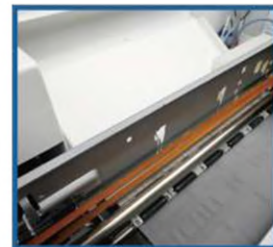
### Print Sample



### Product Detail

#### Product Parameters

Product Name	Model
Motherboard	L805
Print Head	L805
No. Of Print Heads	Single Print Head
Printing Color	CMYK+WW
Printing Width	Up to 200mm
Equipment Size	580*260*200mm
Equipment Weight	10.5kg
Print Head Cleaning	Auto Cleaning
Printing Media	Roll & Sheet Pet Film
Software	AcroRip9.03(free)/EcoRIP
Printing Resolution	1440dpi
Printing Speed	A4(1440dpi/3min)
Ink Consumption	1m²/5ml
Suction Platform	No
Ink Type	DTF Ink
USB Interface	USB3.0
Printing Environment	15-30°C
Relative Humidity	40-60 %
Eated Power	50W
File Format	tiff/jpeg/jpg/png/pdf/eps.etc
Warranty Time	38 months warranty (ink contact parts are not warranty)
Printing Material	Textile/Fabric/Leather/Canvas/ Cotton/Linen/ Chemical Fibre, etc



# A3 DTF Printer

## Product Introduction

### 1. White circulation system

Advantage:

(1) Inside and outside bottle circulation, prevents blockages from building up in the printhead.  
(2) Prevent ink precipitate in ink tube, save ink cost.



### 2. PET Film control system

Sheets and rolls film can be easily control by the printer

Advantage:

Customers no need RollPrint software to control the PET Film, easy to use.



### 3. Regular automatic cleaning system

Automatically cleans the print head once every 12 hours under power-on state.

Advantage:

Consumes about 0.5 kWh of electricity every day. Prevent print head clogging.



### 4. White ink mixing system

The white ink bottle has a motor unit that stirs the white ink.

Advantage:

Prevent white ink from settling, get the better white color printed effect and a high degree of color reproduction. Also it can prevent clogging the printhead, prolong the service life of parts.



### 5. 100ml Ink Bottle Set

#### Customisable 250ml ink Bottles

Adding ink is easier, and keeping the ink from being added multiple times drastically reduces ink deposits.



### -----Printing Process-----



### -----Product Detail-----



### Product Parameters

Product Name	Model	
Motherboard	R1390	L1800
Print Head	1390	L1800
No. Of Print Heads	Single Print Head	
Printing Color	CMYK+WW	
Printing Width	Up to 340mm	
Equipment Size	750*350*250mm	
Equipment Weight	22kg	
Print Head Cleaning	Auto Cleaning	
Printing Media	Roll & Sheet Pet Film	
Printing Resolution	1440dpi	
Printing Speed	A3(1440dpi/10min)	
Software	AcroRIP9.03(free)/EraRIP	
Suction Platform	Yes	
Ink Type	DTF Ink	
USB Interface	USB3.0	
Printing Environment	15-30°C	
Relative Humidity	40-60%	
Rated Power	50W	
File Format	tiff/jpeg/jpg/png/pdf/eps .etc	
Warranty Time	38 months warranty (Ink contact parts are not warranty)	

# A3 MAXL DTF Printer

## Product Introduction

### 1. White circulation system

Advantage:

- (1) Inside and outside bottle circulation, prevents blockages from building up in the printhead .
- (2) Prevent ink precipitate in ink tube, save ink cost.



### 2. PET Film control system

Sheets and rolls film can be easily control by the printer

Advantage:

Customers no need RollPrint software to control the PET Film, easy to use.



### 3. Regular automatic cleaning system

regular automatic cleaning system:

Automatically cleans the print head once every 12 hours under power-on state.

Advantage:

Consumes about 0.5 kWh of electricity every day. Prevent print head clogging.



### 4. White ink mixing system

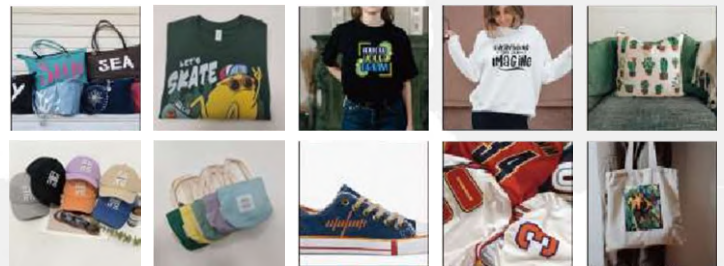
The white ink bottle has a motor unit that stirs the white ink.

Advantage:

Prevent white ink from settling, get the better white color printed effect and a high degree of color reproduction. Also it can prevent clogging the printhead, prolong the service life of parts.



### ----- Print Sample -----



### ----- Product Detail -----



### Product Parameters

Product Name	DTF Printer
Motherboard	Hoson
Print Head	XP600
No. Of Print Heads	Single Print Head
Printing Color	CMYK+WW
Printing Width	Up to 350mm
Equipment Size	800*395*315mm
Equipment Weight	33kg
Print Head Cleaning	Auto Cleaning
Printing Media	Roll & Sheet Pet Film
Software	Rip/EraRip
Printing Resolution	1440dpi
Printing Speed	8pass 3 m/h
Suction Platform	Yes
Ink Type	DTF Ink
USB Interface	USB3.0
Printing Environment	15-30°C
Relative Humidity	40-60%
Eated Power	50W
File Format	tiff/jpeg/jpg/png/pdf/eps.etc
Warranty Time	38 months warranty (Ink contact parts are not warranty)
Printing Material	Textile/Fabric/Leather/Canvas/Cotton/Linen/ Chemical Fibe, etc.

# A3 Max DTF Printer

## Product Introduction

### 1. White circulation system

Advantage:

- (1) Inside and outside bottle circulation, prevents blockages from building up in the printhead.
- (2) Prevent ink precipitate in ink tube, save ink cost.

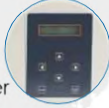


### 2. PET Film control system

Sheets and rolls film can be easily control by the printer

Advantage:

Customers no need RollPrint software to control the PET Film, easy to use.



### 3. Regular automatic cleaning system

Automatically cleans the print head once every 12 hours under power-on state.

Advantage:

Consumes about 0.5 kWh of electricity every day. Prevent print head clogging.



### 4. White ink mixing system

The white ink bottle has a motor unit that stirs the white ink.

Advantage:

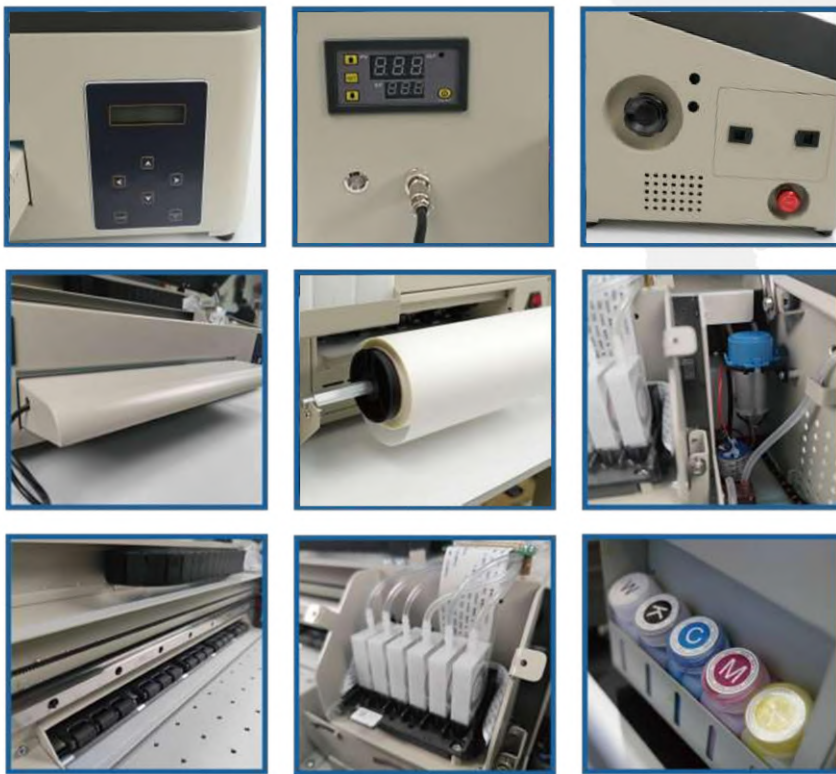
Prevent white ink from settling, get the better white color printed effect and a high degree of color reproduction. Also it can prevent clogging the printhead, prolong the service life of parts.



## ----- Product Application -----



## ----- Product Detail -----



## Product Parameters

Product Name	DTF Printer
Motherboard	Hoson
Print Head	XP600 / DX7
No. Of Print Heads	Single Print Head
Printing Color	CMYKWW/CMYKWWWW
Printing Width	Up to 350mm
Equipment Size	770*320*260mm
Equipment Weight	30kg
Print Head Cleaning	Auto Cleaning
Printing Media	Roll & Sheet Pet Film
Software	Photoprint(free)/Rin/ErRip/Maintop
Printing Resolusion	1440dpi
Printing Speed	8pass 3㎡/h
Suction Platform	Yes
Ink Type	DTF Ink
USB Interface	Network Interface/USB3.0
Printing Environment	15-30 C
Relative Humidity	40-60%
Rated Power	100W
File Format	tiff/jpeg/jpg/png/pdf/eps.etc
Warranty Time	3 years warranty (Ink contact parts are not warranty)
Printing Material	Textile/Fabric/Leather/Canvas/Cotton/Linen/ Chemical Fibe, etc

# A3 Pro DTF Printer

## Product Introduction

### 1. White circulation system

Advantage:

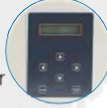
- (1) Inside and outside bottle circulation, prevents blockages from building up in the printhead.
- (2) Prevent ink precipitate in ink tube, save ink cost.



### 2. PET Film control system

Sheets and rolls film can be easily control by the printer

Advantage:  
Customers no need RollPrint software to control the PET Film, easy to use.



### 3. Regular automatic cleaning system

Automatically cleans the print head once every 12 hours under power-on state.

Advantage:

Consumes about 0.5 kWh of electricity every day. Prevent print head clogging.



### 4. White ink mixing system

The white ink bottle has a motor unit that stirs the white ink.

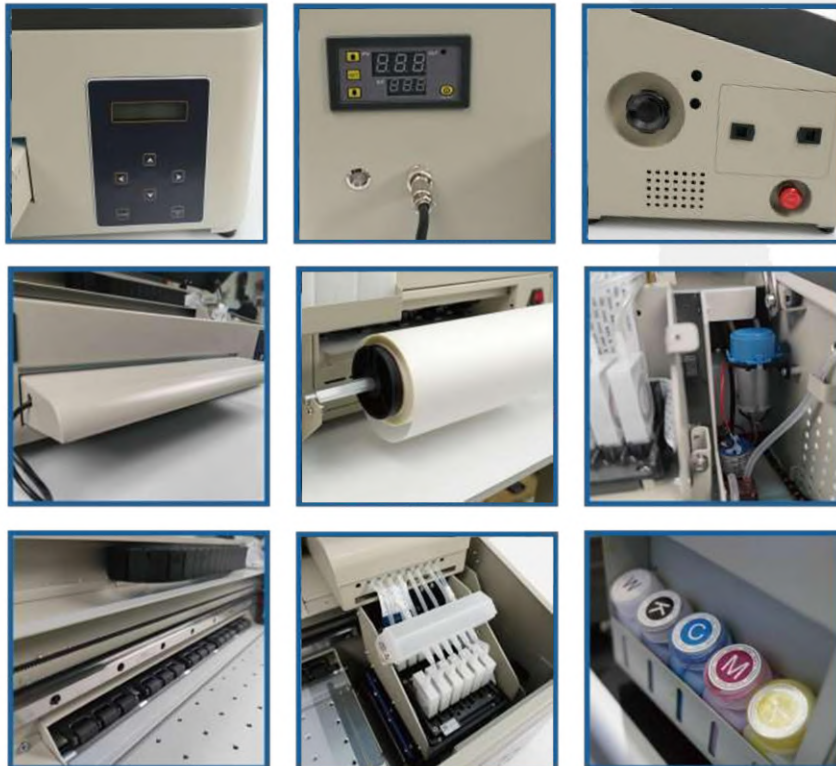
Advantage:  
Prevent white ink from settling, get the better white color printed effect and a high degree of color reproduction. Also it can prevent clogging the printhead, prolong the service life of parts.



### ----- Product Application -----



## ----- Product Detail -----



### Product Parameters

Product Name	DTF Printer
Motherboard	Hoson
Print Head	XP600
No. Of Print Heads	Dual Print Heads
Printing Color	CMYKCM+WWWWWW/CMYKLCM+WWWWWW
Printing Width	Up to 350mm
Equipment Size	770*320*260mm
Equipment Weight	30kg
Print Head Cleaning	Auto Cleaning
Printing Media	Roll & Sheet Pet Film
Software	Photoprint(free)/Rin/ErRip/Maintop
Printing Resolution	1440dpi
Printing Speed	8pass 5 m <sup>2</sup> /h
Suction Platform	Yes
Ink Type	DTF Ink
USB Interface	Network Interface/USB3.0
Printing Environment	15-30°C
Relative Humidity	40-60%
Rated Power	100W
File Format	tiff/jpeg/jpg/png/pdf/eps .etc
Warranty Time	3 years warranty (ink contact parts are not warranty)
Printing Material	Textile/Fabric/Leather/Canvas/Cotton/Linen/ Chemical Fibe, etc.

# A3 Pro DTF Printer

## Product Introduction

### 1. White circulation system

Advantage:

- (1) Inside and outside bottle circulation, prevents blockages from building up in the printhead.
- (2) Prevent ink precipitate in ink tube, save ink cost.



### 2. PET Film control system

Sheets and rolls film can be easily control by the printer.

Advantage:

Customers no need RollPrint software to control the PET Film, easy to use.



### 3. Regular automatic cleaning system

Automatically cleans the print head once every 12 hours under power-on state.

Advantage:

Consumes about 0.5 kWh of electricity every day. Prevent print head clogging.



### 4. White ink mixing system

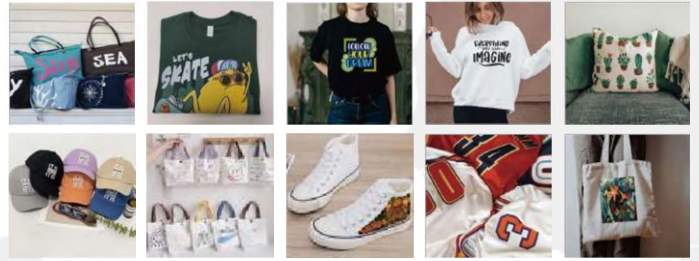
The white ink bottle has a motor unit that stirs the white ink.

Advantage:

Prevent white ink from settling, get the better white color printed effect and a high degree of color reproduction. Also it can prevent clogging the printhead, prolong the service life of parts.



## ----- Print Sample -----



## ----- Product Detail -----

### Product Parameters

Product Name	DTF Printer
Motherboard	Hoson
Print Head	11600
No. Of Print Heads	Dual Print Heads
Printing Color	CMYK+WWWW
Printing Width	Up to 350mm
Equipment Size	780*390*280mm
Equipment Weight	27.5kg
Print Head Cleaning	Auto Cleaning
Printing Media	Roll & Sheet Pet Film
Software	Photoprint[free]/EroRip /Maintop
Printing Resolusion	1440dpi
Printing Speed	8pass 5m /h
Suction Platform	Yes
Ink Type	DTFink
USB Interface	USB3.0
Printing Environment	15-30°C
Relative Humidity	40-60%
EatedPower	50W
File Format	tiff/jpeg/jpg/png/pdf/eps.etc
Warranty Time	38 months warranty (Ink contact parts are not warranty)
Printing Material	Textile/Fabric/Leather/Canvas/ Cotton/Linen/ Chemical Fibre, etc.



# A2 DTF Printer

## Product Introduction

### 1. White circulation system

Advantage:

(1) Inside and outside bottle circulation, prevents blockages from building up in the printhead.  
(2) Prevent ink precipitate in ink tube, save ink cost.



### 2. PET Film control system

Sheets and rolls film can be easily control by the printer

Advantage:

Customers no need RollPrint software to control the PET Film, easy to use.



### 3. Regular automatic cleaning system

Automatically cleans the print head once every 12 hours under power-on state.

Advantage:

Consumes about 0.5 kWh of electricity every day. Prevent print head clogging.



### 4. White ink mixing system

The white ink bottle has a motor unit that stirs the white ink.

Advantage:

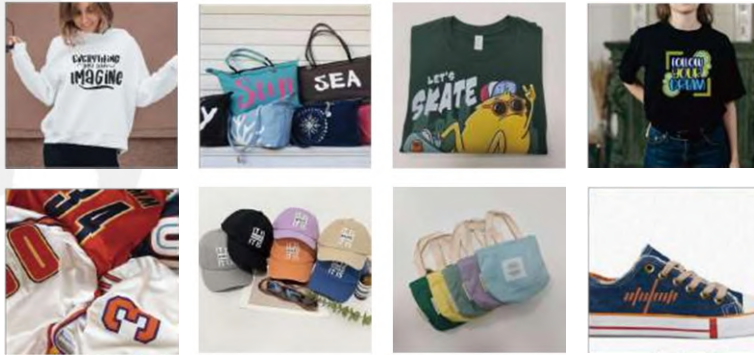
Prevent white ink from settling, get the better white color printed effect and a high degree of color reproduction. Also it can prevent clogging the printhead, prolong the service life of parts.



## Product Parameters

Product Name	DTF Printer
Motherboard	Hoson
Print Head	XP600
No. Of Print Heads	Dual Print Heads
Printing Color	CMYKM+WWWWW
Printing Width	Up to 520mm
Equipment Size	980*450*360mm
Equipment Weight	55kg
Print Head Cleaning	Auto Cleaning
Printing Media	Roll & Sheet Pet Film
Software	Photoprint(free)/Riin/Erarip/Maintop
Printing Resolution	1440dpi
Printing Speed	8pass: 6 m <sup>2</sup> /h
Suction Platform	Yes
Ink Type	DTF Ink
USB Interface	Network Interface
Printing Environment	15-30°C
Relative Humidity	40-60%
Rated Power	150W
File Format	tiff/jpeg/jpg/png/pdf/eps .etc
Warranty Time	38 months warranty (Ink contact parts are not warranty)
Printing Material	Textile/Fabric/Leather/Canvas/Cotton/Linen/ Chemical Fibre, etc.

## ----- Print Sample -----



## ----- Product Detail -----



# A1 (XP600) DTF Printer

## Product Introduction

### 1. White circulation system

Advantage:

- (1) Inside and outside bottle circulation, prevents blockages from building up in the printhead.
- (2) Prevent ink precipitate in ink tube, save ink cost.



### 2. PET Film control system

Sheets and rolls film can be easily control by the printer

Advantage:

Customers no need RollPrint software to control the PET Film, easy to use.



### 3. Regular automatic cleaning system

Automatically cleans the print head once every 12 hours under power-on state.

Advantage:

Consumes about 0.5 kWh of electricity every day. Prevent print head clogging.



### 4. White ink mixing system

The white ink bottle has a motor unit that stirs the white ink.

Advantage:

Prevent white ink from settling, get the better white color printed effect and a high degree of color reproduction. Also it can prevent clogging the printhead, prolong the service life of parts.



## Product Parameters

Product Name	DTF Printer
Motherboard	Hoson
Print Head	XP600
No. Of Print Heads	Dual Print Heads
Printing Color	CMYKM+WWWWWWW
Printing Width	Up to 620mm
Equipment Size	980*450*360mm
Equipment Weight	55kg
Print Head Cleaning	Auto Cleaning
Printing Media	Roll & Sheet Pet Film
Software	Photoprint(tree)/Rin/EroRip/Mainlop
Printing Resolution	1440dpi
Printing Speed	8pass: 6 m <sup>2</sup> /h
Suction Platform	Yes
Ink Type	DTF Ink
USB Interface	Network Interface
Printing Environment	15-30°C
Relative Humidity	40-80%
Rated Power	150W
File Format	tiff/jpeg/jpg/png/pdf/eps.etc
Warranty Time	38 months warranty (Ink contact parts are not warranty)
Printing Material	Textile/Fabric/Leather/Canvas/Cotton/Linier/ Chemical Fibe, etc.

## -----DTF Printer Set-----



## -----Related Products-----



## -----Print Sample-----



# A1 DTF Printer

## Product Introduction

### 1. White circulation system

Advantage:

(1) Inside and outside bottle circulation, prevents blockages from building up in the printhead.

(2) Prevent ink precipitate in ink tube, save ink cost.



### 2. PET Film control system

Sheets and rolls film can be easily control by the printer

Advantage:

Customers no need RollPrint software to control the PET Film, easy to use.



### 3. Regular automatic cleaning system

Automatically cleans the print head once every 12 hours under power-on state.

Advantage:

Consumes about 0.5 kWh of electricity every day. Prevent print head clogging.



### 4. White ink mixing system

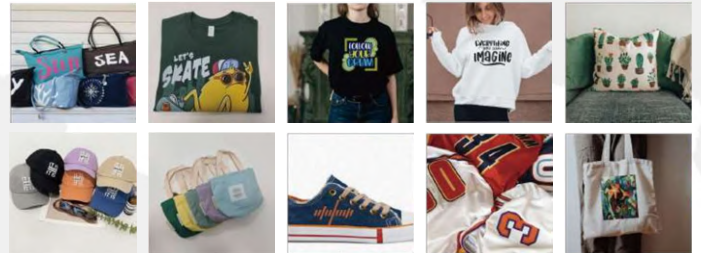
The white ink bottle has a motor unit that stirs the white ink.

Advantage:

Prevent white ink from settling, get the better white color printed effect and a high degree of color reproduction. Also it can prevent clogging the printhead, prolong the service life of parts.



## Print Sample



## Product Parameters

Product Name	DTF Printer	
Motherboard	Hoson	
Print Head	11600	13200
No. Of Print Heads	Dual Print Heads	
Printing Color	CMYK+WWWW	
Printing Width	Up to 620mm	
Equipment Size	1160*500*370mm	
Equipment Weight	60kg	
Print Head Cleaning	Auto-Cleaning	
Printing Media	Roll & Sheet Pet Film	
Software	Photoprint(free)/Rin/ErRip/Maintop	
Printing Resolution	1440dpi	
Printing Speed	8pass: 10 m <sup>2</sup> /h	
Suction Platform	Yes	
Ink Type	DTF Ink	
USB Interface	Network Interface	
Printing Environment	15-30°C	
Relative Humidity	40-60%	
Rated Power	150W	
File Format	tiff/jpeg/jpg/png/pdf/eps.etc	
Warranty Time	38 months warranty (Ink contact parts are not warranty)	
Printing Material	Textile/Fabric/Leather/Canvas/Cotton/Linen/ Chemical Fibre, etc.	

## Product Detail



# A3 Pro DTG Printer

## Product Introduction

### 1. Leadshine Motor

High-precision printing, improve printing speed



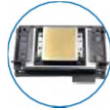
### 2. White Ink Stirring

Prevents white ink precipitation from clogging the nozzle, so as to reduce the loss rate of the print head and prolong the service life of the print head.



### 3. Timed Cleaning

The printer automatically cleans every two hours (the time can be customized for cleaning), without computer control.



### 4. One-Key Emergency Stop Button

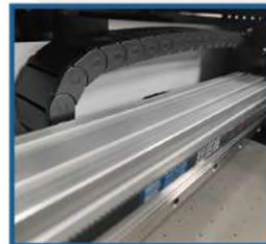
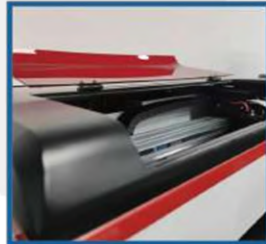
When the nozzle scrapes the film or the printing error, it can stop in time to improve the safety performance of the machine.



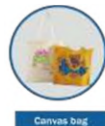
## Product Parameters

Product Name	DTG Printer
Model	A3
Motherboard	Hoson
Print Head	XP600
No. Of Print heads	Dual Print Heads
Printing Color	CMYK+WWW
Printing Size	350*450mm
Printing Height	0-130mm
Software	Photoprint(free)/Riin/EraRip/Maintop
Operation System	Windows XP/7/8/10/11
Print Head Cleaning	Auto Cleaning
Printing Resolution	8pass 5㎡/h
Suction Platform	Yes
Ink Type	DTG Ink
USB Interface	Network Interface/USB3.0
Printing Environment	15-30℃
Relative Humidity	40-60%
Rated Power	200W
File Format	tiff/jpeg/jpg/png/pdf/eps .etc
Warranty Time	38 months warranty (Ink contact parts are not warranty)
Equipment Size	760*550*550mm
Equipment Weight	64.8kg
Printing Material	Metal/Acrylic/Glass/Wood/Plastic/Ceramics/Leather/KT Board/Canvas/ABS/PVC/TPU, etc.

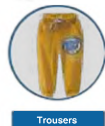
## Product Detail



## Product Application



Canvas bag



Trousers



socks



Short sleeves



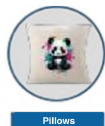
clothes



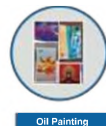
Sweatshirts



Tote bag



Pillows



Oil Painting



T-shirt



Pocket



Denim