

HAITIAN PLASTICS MACHINERY GROUP CO., LTD
No.1688, Haitian Road, Xiaogang, Beilun, Ningbo, Zhejiang,
China 315801
+ 86-574-8617 7005 (China)
+ 86-574-8617 7242 (International)
haitian@mail.haitian.com
www.haitianpm.com

NINGBO HAITIAN HUAYUAN MACHINERY CO.,LTD.
No.1, Nanhuan Road, Export Processing Zone, Beilun,
Ningbo, Zhejiang, 315806 P.R. China
+86-574-8617 7242
+86-574-8622 1864
haitian@mail.haitian.com
www.haitianpm.com



SPECIFICATIONS

SE



HAITIAN MA III/SE SERIES

Energy-saving servo injection molding machines

600-12,000kN

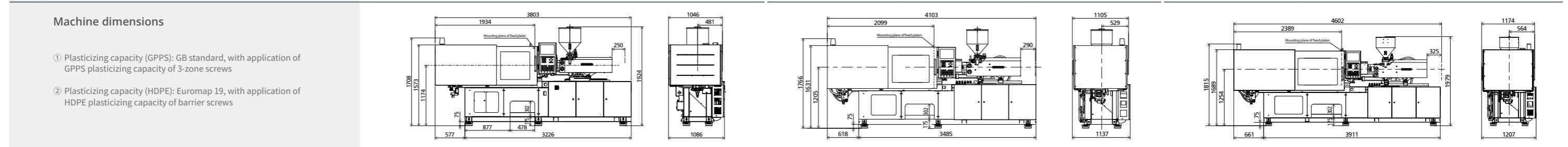
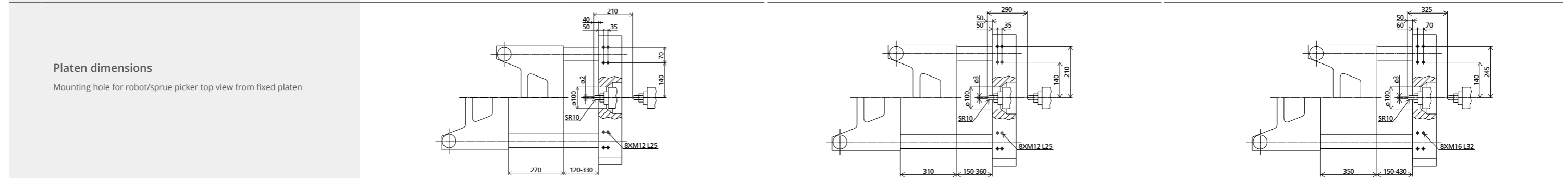
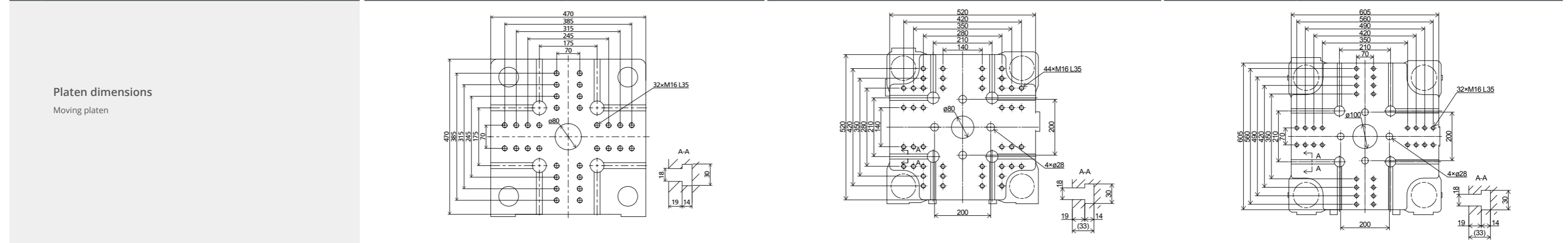
HT 20240520-IV



SPECIFICATION

TECHNICAL DATA
MACHINE TYPE

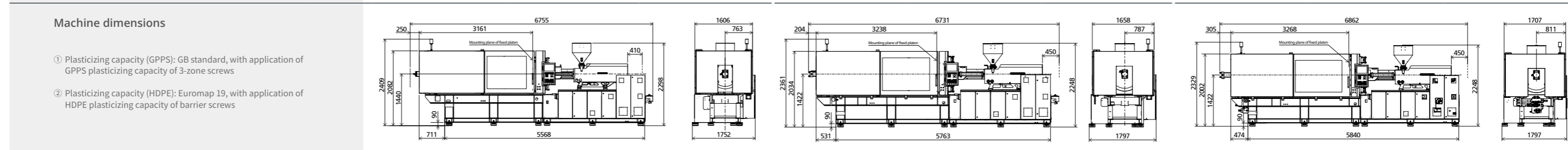
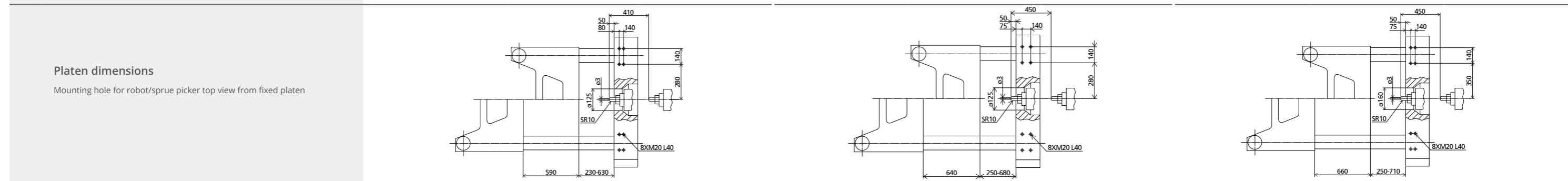
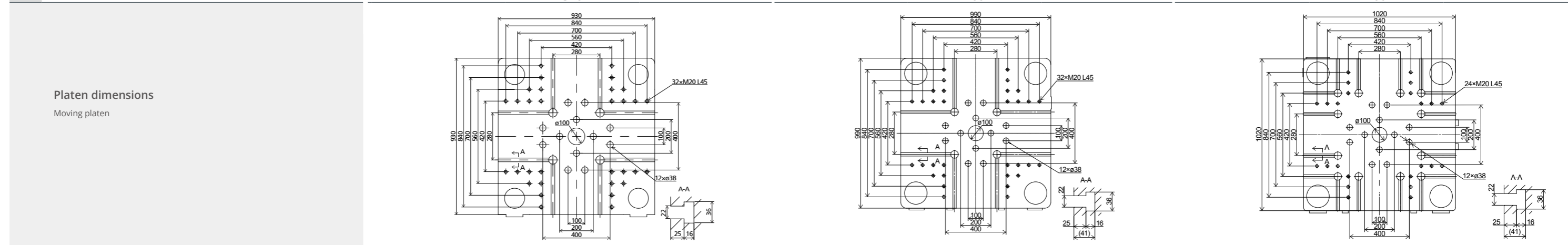
MACHINE TYPE		MA600 III/130SE	MA900 III/280SE	MA1200 III/400SE						
CLAMPING UNIT	Clamping force	kN	600	900	1200					
	Mold opening stroke	mm	270	310	350					
	Mold height min.	mm	120	150	150					
	Mold height max.	mm	330	360	430					
	Dist. between tie-bars (H×V)	mm	310×310	360×360	410×410					
	Ejector stroke	mm	70	100	120					
Ejector force	kN	22	33	33						
INJECTION UNIT	Screw diameter	mm	A 24	B 28	A 32	B 36	C 40	A 36	B 40	C 45
	Screw L/D ratio	L/D	23.3	20	22.5	20	18	23.3	21	18.7
	Injection volume (theoretical)	cm ³	50	68	120	152	188	173	213	270
	Injection weight (PS)	g	45	62	109	138	171	157	194	246
	Injection rate (PS)	g/s	51	70	74	94	116	97	120	152
	Injection pressure	MPa	250	184	237	187	151	231	187	147
	Plasticizing rate (GPPS) ①	g/s	5.1	7.4	10.3	13.6	16.5	14.0	17.1	22.6
	Plasticizing rate (HDPE) ②	g/s	-	-	-	-	-	-	-	-
Screw speed	rpm	0-265	-	0-235	-	-	0-225	-	-	
OTHERS	Pump motor power	kW	13	13	18.5					
	Heater power	kW	6.3	8.1	11.75					
	Machine dimension (L×W×H)	m	3.81×1.09×1.93	4.11×1.14×1.97	4.61×1.21×1.98					
	Machine weight	t	2.5	2.9	3.9					
	Hopper capacity	kg	25	25	25					
Oil tank	l	100	120	155						



SPECIFICATION

TECHNICAL DATA
MACHINE TYPE

MACHINE TYPE		MA2900 III/1350SE	MA3200 III/1800SE	MA3500 III/1800SE	
CLAMPING UNIT	Clamping force	kN	2900	3200	3500
	Mold opening stroke	mm	590	640	660
	Mold height min.	mm	230	250	250
	Mold height max.	mm	630	680	710
	Dist. between tie-bars (H×V)	mm	630×630	680×680	710×710
	Ejector stroke	mm	150	160	160
Ejector force	kN	62	62	110	
INJECTION UNIT	Screw diameter	mm	A 55 B 60 C 65	A 60 B 65 C 70	A 60 B 65 C 70
	Screw L/D ratio	L/D	22 20 18.3	21.7 20 18.6	21.7 20 18.6
	Injection volume (theoretical)	cm ³	617 735 862	848 995 1154	848 995 1154
	Injection weight (PS)	g	562 668 785	771 905 1050	771 905 1050
	Injection rate (PS)	g/s	240 286 335	304 357 414	304 357 414
	Injection pressure	MPa	213 178 152	211 181 155	211 181 155
	Plasticizing rate (GPPS) ①	g/s	36.9 43.8 48.7	53.4 59.2 67.3	53.4 59.2 67.3
	Plasticizing rate (HDPE) ②	g/s	-	75.2 84.6 98.7	75.2 84.6 98.7
Screw speed	rpm	0-205	0-235	0-235	
OTHERS	Pump motor power	kW	37	45	45
	Heater power	kW	21.25	25.45	25.45
	Machine dimension (L×W×H)	m	6.76×1.76×2.41	6.74×1.80×2.36	6.87×1.80×2.33
	Machine weight	t	11.7	12.2	12.8
	Hopper capacity	kg	50	50	50
Oil tank	l	370	460	460	



SPECIFICATION

TECHNICAL DATA
MACHINE TYPE

MACHINE TYPE		MA6500 III/4550SE	MA8000 III/6350SE	MA9000 III/6350SE	
CLAMPING UNIT	Clamping force	kN	6500	8000	9000
	Mold opening stroke	mm	900	1040	1120
	Mold height min.	mm	400	420	450
	Mold height max.	mm	900	1000	1080
	Dist. between tie-bars (H×V)	mm	920×920	1000×1000	1080×1080
	Ejector stroke	mm	260	280	300
Ejector force	kN	186	186	186	
INJECTION UNIT	Screw diameter	mm	A 80 B 90 C 100 D 110	A 90 B 100 C 110 D 120	A 90 B 100 C 110 D 120
	Screw L/D ratio	L/D	24.8 22 19.8 18	24.4 22 20 18.3	24.4 22 20 18.3
	Injection volume (theoretical)	cm ³	2211 2799 3455 4181	2799 3455 4181 4976	2799 3455 4181 4976
	Injection weight (PS)	g	2012 2547 3144 3805	2547 3144 3805 4528	2547 3144 3805 4528
	Injection rate (PS)	g/s	441 558 689 834	583 720 871 1037	583 720 871 1037
	Injection pressure	MPa	226 178 144 119	224 182 150 126	224 182 150 126
	Plasticizing rate (GPPS) ①	g/s	66.1 82.8 101.6 120.6	92.8 114.0 135.0 158.0	92.8 114.0 135.0 158.0
	Plasticizing rate (HDPE) ②	g/s	97.9 123.7 151.6 178.4	137.0 168.0 200.0 232.0	137.0 168.0 200.0 232.0
Screw speed	rpm	0-135	0-140	0-140	
OTHERS	Pump motor power	kW	85	37+65	37+65
	Heater power	kW	54.3	67.8	67.8
	Machine dimension (L×W×H)	m	10.07×2.21×2.71	10.97×2.30×2.73	11.35×2.42×2.80
	Machine weight	t	29.3	36.5	43
	Hopper capacity	kg	100	100	100
Oil tank	l	790	900	900	

